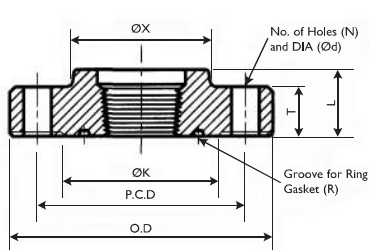
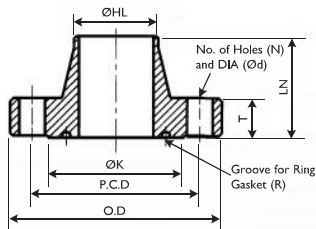


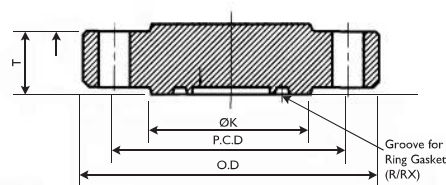
API6A (6B) FLANGES



Threaded Flange



Weld Neck Flange



Blind Flange

BLIND, WELDNECK & COMPANION (THREADED) DIMENSIONS (inches)

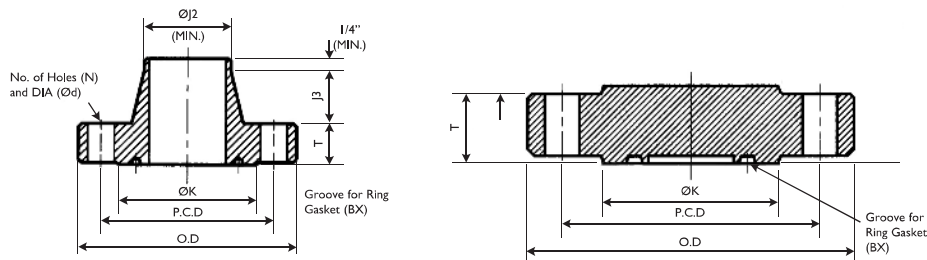
Pressure Rating:- API 6B-2000 PSI WP (With R or RX type Ring Gasket)											
Size	OD	T	ØK	PCD	N	Ød	L	ØX	LN	ØHL	R/RX
2 1/8	6.50	1.31	4.25	5.00	8	0.75	1.75	3.31	3.19	2.38	23
2 1/2	7.50	1.44	5.00	5.88	8	0.88	1.94	3.94	3.44	2.88	26
3	8.25	1.56	5.75	6.62	8	0.88	2.12	4.62	3.56	3.50	31
4 1/8	10.75	1.81	6.88	8.50	8	1.00	2.44	6.00	4.31	4.50	37
5	13	2.06	8.25	10.50	8	1.12	2.69	7.44	4.81	5.56	41
7 1/8	14	2.19	9.50	11.50	12	1.12	2.94	8.75	4.94	6.63	45
9	16.5	2.50	11.88	13.75	12	1.25	3.31	10.75	5.56	8.63	49
11	20	2.81	14.00	17.00	16	1.38	3.69	13.50	6.31	10.75	53
13 1/8	22	2.94	16.25	19.25	20	1.38	3.94	15.75	-	-	57
16 1/8	27	3.31	20.00	23.75	20	1.62	4.50	19.50	-	-	65
21 1/8	32	3.88	25.00	28.50	24	1.75	5.38	24.00	-	-	73

Pressure Rating:- API 6B-3000 PSI WP (With R or RX type Ring Gasket)											
Size	OD	T	ØK	PCD	N	Ød	L	ØX	LN	ØHL	R/RX
2 1/8	8.50	1.81	4.88	6.50	8	1.00	2.56	4.12	4.31	2.38	24
2 1/2	9.62	1.94	5.38	7.50	8	1.12	2.81	4.88	4.44	2.88	27
3	9.50	1.81	6.12	7.50	8	1.00	2.44	5.00	4.31	3.50	31
4 1/8	11.50	2.06	7.12	9.50	8	1.25	3.06	6.25	4.81	4.50	37
5	13.75	2.31	8.50	11.00	8	1.38	3.44	7.50	5.31	5.56	41
7 1/8	15.00	2.50	9.50	12.50	12	1.25	3.69	9.25	5.81	6.63	45
9	18.50	2.81	12.12	15.50	12	1.50	4.31	11.75	6.69	8.63	49
11	21.50	3.06	14.25	18.50	16	1.50	4.56	14.50	7.56	10.75	53
13 1/8	24.00	3.44	16.50	21.00	20	1.50	4.94	16.50	-	-	57
16 1/8	27.75	3.94	20.62	24.25	20	1.75	5.06	20.00	-	-	66
20 1/8	33.75	4.75	25.50	29.25	20	2.12	6.75	24.50	-	-	74

Pressure Rating:- API 6B-5000 PSI WP (With RX type Ring Gasket)											
Size	OD	T	ØK	PCD	N	Ød	L	ØX	LN	ØHL	RX
2 1/8	8.50	1.81	4.88	6.50	8	1.00	2.56	4.12	4.31	2.38	24
2 1/2	9.62	1.94	5.38	7.50	8	1.12	2.81	4.88	4.44	2.88	27
3	10.50	2.19	6.62	8.00	8	1.25	3.19	5.25	4.94	3.50	35
4 1/8	12.25	2.44	7.62	9.50	8	1.38	3.88	6.38	5.19	4.50	39
5	14.75	3.19	9.00	11.50	8	1.62	4.44	7.75	6.40	5.56	44
7 1/8	15.50	3.62	9.75	12.50	12	1.50	5.06	9.00	7.13	6.63	46
9	19	4.06	12.50	15.50	12	1.75	6.06	11.50	8.81	8.63	50
11	23	4.69	14.63	19.00	12	2.00	6.69	14.50	10.44	10.75	54



API6A (6BX) FLANGES



WELDNECK & BLIND RTJ DIMENSIONS (inches)

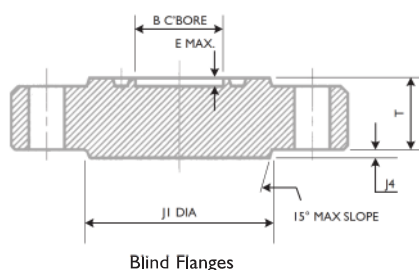
Rating:- API 6BX-10000 PSI WP (With BX type Ring Gasket)									
Size	OD	T	ØK	PCD	N	Ød	ØJ2	J3	BX
1 1/8	7.38	1.66	4.12	5.75	8	0.88	2.56	1.91	151
2 1/8	7.88	1.73	4.38	6.25	8	0.88	2.94	2.03	152
2 3/8	9.12	2.02	5.19	7.25	8	1.00	3.62	2.25	153
3 1/8	10.62	2.30	6.00	8.50	8	1.12	4.34	2.50	154
4 1/8	12.44	2.77	7.28	10.90	8	1.25	5.75	2.88	155
5 1/8	14.06	3.13	8.69	11.81	12	1.25	7.19	3.19	169
7 1/8	18.88	4.06	11.88	15.88	12	1.62	10.00	3.75	156
9	21.75	4.88	14.12	18.75	16	1.62	12.88	3.69	157
11	25.75	5.56	16.88	22.25	16	1.88	15.75	4.06	158
13 1/8	30.25	6.62	20.38	26.50	20	2.00	19.50	4.50	159
16 1/8	34.31	6.62	22.69	30.56	24	2.00	23.69	3.00	162

Rating:- API 6BX-15000 PSI WP (With BX type Ring Gasket)									
Size	OD	T	ØK	PCD	N	Ød	ØJ2	J3	BX
1 1/8	8.19	1.78	4.19	6.31	8	1.00	2.81	1.88	151
2 1/8	8.75	2.00	4.50	6.88	8	1.00	3.25	2.12	152
2 3/8	10.00	2.25	5.25	7.88	8	1.12	3.94	2.25	153
3 1/8	11.31	2.53	6.06	9.06	8	1.25	4.81	2.50	154
4 1/8	14.19	3.09	7.62	11.44	8	1.50	6.25	2.88	155
7 1/8	19.88	4.69	12.00	16.88	16	1.62	10.88	3.62	156

Rating:- API 6BX-20000 PSI WP (With BX type Ring Gasket)									
Size	OD	T	ØK	PCD	N	Ød	ØJ2	J3	BX
1 1/8	10.12	2.50	4.62	8.00	8	1.12	4.31	1.94	151
2 1/8	11.31	2.81	5.19	9.06	8	1.25	5.00	2.06	152
2 3/8	12.81	3.12	5.94	10.31	8	1.38	5.69	2.31	153
3 1/8	14.06	3.38	6.75	11.31	8	1.50	6.31	2.50	154
4 1/8	17.56	4.19	8.62	14.06	8	1.88	8.12	2.88	155
7 1/8	25.81	6.50	13.88	21.81	16	2.12	13.31	3.81	156



API6A (6BX) FLANGES



BLIND RTJ DIMENSIONS LARGER SIZES (in)

Pressure Rating:- API 6BX-2000 PSI WP (With BX type Ring Gasket)				
Nominal Size B	Flange Thickness T	Hub Diameter J1	Groove Depth E	Added Hub Thickness J4
26½	4.97	32.91	0.844	0.38
30	5.28	36.69	0.906	0.69

Pressure Rating:- API 6BX-3000 PSI WP (With BX type Ring Gasket)				
Nominal Size B	Flange Thickness T	Hub Diameter J1	Groove Depth E	Added Hub Thickness J4
26½	6.34	34.25	0.844	0.00
30	6.58	38.19	0.906	0.50

Pressure Rating:- API 6BX-5000 PSI WP (With BX type Ring Gasket)				
Nominal Size B	Flange Thickness T	Hub Diameter J1	Groove Depth E	Added Hub Thickness J4
13%	4.44	18.94	0.562	0.94
16%	5.12	21.88	0.328	0.69
18%	6.53	26.56	0.719	0.75
21½	7.12	29.88	0.750	0.88

Pressure Rating:- API 6BX-10000 PSI WP (With BX type Ring Gasket)				
Nominal Size B	Flange Thickness T	Hub Diameter J1	Groove Depth E	Added Hub Thickness J4
5½	3.12	8.81	0.375	0.25
7½	4.06	11.88	0.438	0.38
9	4.88	14.75	0.500	0.38
11	5.56	17.75	0.562	0.56
13%	6.62	21.75	0.625	0.69
16%	6.62	25.81	0.328	1.19
18%	8.78	29.62	0.719	1.00
21½	9.50	33.38	0.750	1.25

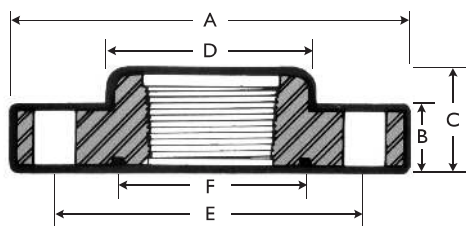
Pressure Rating:- API 6BX-15000 PSI WP (With BX type Ring Gasket)				
Nominal Size B	Flange Thickness T	Hub Diameter J1	Groove Depth E	Added Hub Thickness J4
7½	4.69	12.81	0.438	0.31
9	5.75	17.00	0.500	0.56
11	7.38	23.00	0.562	0.50
13%	8.06	23.44	0.625	0.69
18%	10.06	32.00	0.719	1.38

Pressure Rating:- API 6BX-20000 PSI WP (With BX type Ring Gasket)				
Nominal Size B	Flange Thickness T	Hub Diameter J1	Groove Depth E	Added Hub Thickness J4
7½	6.50	15.19	0.438	0.31
9	8.06	18.94	0.500	0.25
11	8.81	22.31	0.562	0.50
13%	11.50	27.31	0.625	0.56

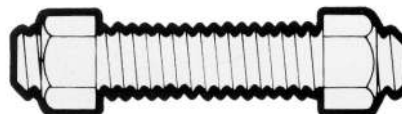




API6A (6B/6BX) FLANGES



API Companion Flange



Flange Stud Bolts and Nuts

CHART SHOWING STUD SIZES & RING GASKET SIZE

API SPECS FOR RING-JOINT FLANGES	NEW API NOMINAL SIZE	FLANGE							API RING NO	STUDS WITH NUTS			
		A OD	B THICKNESS	C TOTAL THICKNESS	D DIAM. OF HUB	E DIAM. OF BOLT CIRCLE	F PCD RING GROOVE	APPROX WT LBS		NO	SIZE	APPROX WT LBS PER SET	"OLD" NOMINAL SIZE
2000 PSI WVP	2 1/2"	6 1/2"	1 1/8"	1 1/4"	3 1/8"	5"	3 1/4"	9 lb	R23/RX23	8	3/4 x 4 1/2	5	2"
	2 3/4"	7 1/2"	1 1/8"	1 1/2"	3 1/4"	5 1/2"	4"	13 lb	R26/RX26	8	3/4 x 5	8	2 1/2"
	3 1/8"	8 1/4"	1 1/8"	2 1/8"	4 1/8"	6 1/8"	4 1/2"	16 lb	R31/RX31	8	3/4 x 5 1/2	8	3"
	4 1/8"	10 1/4"	1 3/8"	2 1/2"	6"	8 1/2"	5 1/2"	37 lb	R37/RX37	8	3/4 x 6	12	4"
	7 1/8"	14"	2 1/8"	2 3/8"	8 1/4"	11 1/2"	8 1/8"	80 lb	R45/RX45	12	1 x 7	29	6"
	9"	16 1/2"	2 1/2"	3 1/8"	10 1/4"	13 3/4"	10 1/8"	115 lb	R49/RX49	12	1 1/8 x 8	38	8"
	11"	20"	2 3/8"	3 1/4"	13 1/2"	17"	12 1/2"	177 lb	R53/RX53	16	1 1/2 x 8 1/2	73	10"
3000 PSI WVP	2 1/2"	8 1/2"	1 1/8"	2 1/4"	4 1/4"	6 1/2"	3 3/4"	25 lb	R24/RX24	8	3/4 x 6	12	2"
	2 3/4"	9 1/2"	1 1/8"	2 1/2"	4 1/2"	7 1/2"	4 1/4"	36 lb	R27/RX27	8	1 x 6 1/2	17	2 1/2"
	3 1/8"	10 1/4"	1 1/8"	2 3/8"	5"	7 1/2"	4 1/2"	31 lb	R31/RX31	8	3/4 x 6	12	3"
	4 1/8"	11 1/4"	2 1/8"	3 1/8"	6 1/4"	9 1/4"	5 1/2"	53 lb	R37/RX37	8	1 1/8 x 7	24	4"
	7 1/8"	15"	2 1/2"	3 1/4"	9 1/4"	12 1/2"	8 1/8"	106 lb	R45/RX45	12	1 1/8 x 8	40	6"
	9"	18 1/2"	2 3/8"	4 1/8"	11 1/4"	15 1/2"	10 1/8"	172 lb	R49/RX49	12	1 1/2 x 9	69	8"
	11"	21 1/2"	3 1/8"	4 1/2"	14 1/2"	18 1/2"	12 1/4"	245 lb	R53/RX53	16	1 1/2 x 9 1/2	95	10"
5000 PSI WVP	13 1/2"	24"	3 1/2"	4 3/4"	16 1/2"	21"	15"	326 lb	R57/RX57	20	1 3/4 x 10 1/4	125	12"
	2 1/2"	8 1/2"	1 1/8"	2 1/4"	4 1/4"	6 1/2"	3 3/4"	25 lb	R24/RX24	8	3/4 x 6	12	2"
	2 3/4"	9 1/2"	1 1/8"	2 1/2"	4 1/2"	7 1/2"	4 1/4"	36 lb	R27/RX27	8	1 x 6 1/2	17	2 1/2"
	3 1/8"	10 1/4"	2 1/8"	3 1/8"	5 1/4"	8"	5 1/2"	48 lb	R35/RX35	8	1 1/8 x 7 1/4	24	3"
	4 1/8"	12 1/4"	2 3/8"	3 1/8"	6 1/4"	9 1/4"	6 1/2"	73 lb	R39/RX39	8	1 1/4 x 8	35	4"
	7 1/8"	15 1/2"	3 1/8"	5 1/8"	9"	12 1/2"	8 1/8"	164 lb	R46/RX46	12	1 1/2 x 10 1/4	75	6"
	9"	19"	4 1/8"	6 1/8"	11 1/4"	15 1/2"	10 1/8"	258 lb	R50/RX50	12	1 1/2 x 12	124	8"
10000 PSI WVP (SERIES 2900) (Obsolete)	11"	23"	4 3/8"	6 1/4"	14 1/4"	19"	12 1/2"	436 lb	R54/RX54	12	1 1/2 x 13 1/4	187	10"
	2"	7 1/4"	2 1/8"	4 1/4"	3 1/8"	5 1/4"	3 1/8"	28 lb	R85/RX85	8	3/4 x 7	10	2"
	2 1/2"	8 1/8"	2 3/4"	5 1/8"	3 3/4"	6 1/8"	3 3/4"	45 lb	R86/RX86	8	1 x 8	14	2 1/2"
	3"	10"	3 1/8"	5 1/8"	4 1/2"	7 1/2"	3 1/2"	57 lb	R87/RX87	8	1 1/8 x 9	20	3"
	3 1/2"	11 1/2"	3 3/8"	5 1/2"	5"	8 1/2"	4 1/2"	100 lb	R89/RX89	8	1 1/2 x 9 1/4	28	3 1/2"
	4"	12 1/2"	3 3/4"	6 1/4"	5 1/8"	9 1/2"	4 1/2"	104 lb	R88/RX88	8	1 1/2 x 10 1/4	36	4"
	10"	20 1/2"	5 1/8"	11"	11 1/4"	16 1/2"	10 1/2"	600 lb	R91/RX91	12	2 x 16 1/2	177	10"
10000 PSI WVP (6BX)	1 1/2"	7 3/8"	1 1/2"	-	3 1/2"	5 1/4"	+ 3.062"	-	BX-151	8	3/4 x 5	8	1 1/2"
	2 1/8"	7 7/8"	1 3/4"	-	3 3/8"	6 1/4"	+ 3.395"	-	BX-152	8	3/4 x 5 1/2	8	2 1/8"
	2 3/8"	9 1/2"	2 1/8"	-	4 1/4"	7 1/4"	+ 4.046"	-	BX-153	8	3/4 x 6	11	2 3/8"
	3 1/8"	10 3/8"	2 3/4"	-	5 1/2"	8 1/2"	+ 4.685"	-	BX-154	8	1 x 6 1/4	17	3 1/8"
	4 1/8"	12 1/8"	2 3/4"	-	7 1/8"	10 1/8"	+ 5.930"	-	BX-155	8	1 1/8 x 8	26	4 1/8"
	7 1/8"	18 3/8"	4 1/8"	-	11 1/8"	15 1/8"	+ 9.521"	-	BX-156	12	1 1/2 x 11 1/4	95	7 1/8"
	9"	21 1/4"	4 3/8"	-	14 1/4"	18 1/4"	+ 11.774"	-	BX-157	16	1 1/2 x 13	112	9"
15000 PSI WVP (6BX)	11"	25 1/4"	5 1/8"	-	17 1/4"	22 1/4"	+ 14.064"	-	BX-158	16	1 1/2 x 15	160	11"
	1 1/2"	8 1/8"	1 3/8"	-	3 3/8"	6 1/8"	+ 3.062"	-	BX-151	8	3/4 x 5 1/2	9	1 1/2"
	2 1/8"	8 3/4"	2"	-	4 3/8"	6 3/8"	+ 3.395"	-	BX-152	8	3/4 x 6	11	2 1/8"
	2 3/8"	10"	2 1/4"	-	5 1/8"	7 3/8"	+ 4.046"	-	BX-153	8	1 x 6 1/4	16	2 3/8"
	3 1/8"	11 3/8"	2 3/8"	-	6 1/8"	9 1/8"	+ 4.685"	-	BX-154	8	1 1/8 x 7 1/2	24	3 1/8"
	4 1/8"	14 1/8"	3 1/2"	-	7 1/8"	11 1/8"	+ 5.930"	-	BX-155	8	1 1/8 x 9 1/4	29	4 1/8"
	7 1/8"	19 1/4"	4 3/8"	-	12 1/8"	16 1/8"	+ 9.521"	-	BX-156	16	1 1/2 x 12 1/4	112	7 1/8"
9"	25 1/2"	5 1/4"	-	17"	21 1/4"	+ 11.774"	-	BX-157	16	1 1/2 x 15 1/4	129	9"	
11"	32"	7 3/8"	-	23"	28"	+ 14.064"	-	BX-158	20	2 x 19 1/4	228	11"	

