

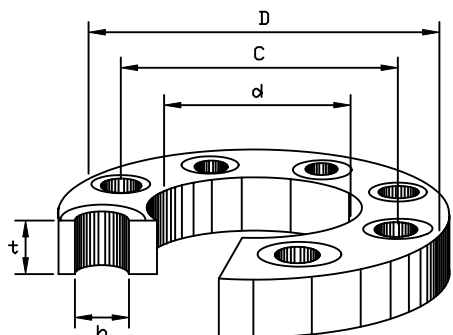
Slip-On

 Series DIN 2573 PN6
 Series DIN 2576 PN10

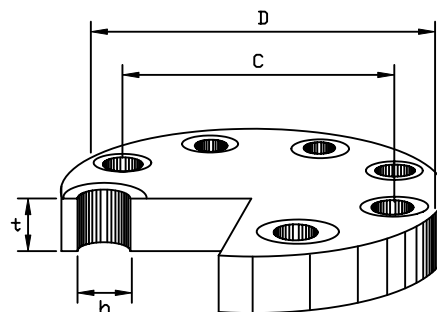
Blind

Series DIN 2527 PN6 & PN10

Flanges - Slip-On & Blind DIN PN6 & PN10



Slip-On Type



Blind Type

Size	DIN PN6								DIN PN10							
	d	D	C	No.	h	t	SO	BL	d	D	C	No.	h	t	SO	BL
010	17.7	75	50	4	14	12	0.27	0.30	17.7	90	60	4	14	14	0.52	0.54
015	22.2	80	55	4	14	12	0.30	0.40	22.2	95	65	4	14	14	0.57	0.61
020	27.6	90	65	4	14	14	0.37	0.50	27.6	105	75	4	14	16	0.73	0.79
025	34.4	100	75	4	14	14	0.45	0.60	34.4	115	85	4	14	16	1.13	1.24
032	43.1	120	90	4	14	16	0.78	0.90	43.1	140	100	4	18	16	1.48	1.66
040	49	130	100	4	14	16	0.83	1.00	49	150	110	4	18	16	1.56	1.81
050	61.1	140	110	4	14	16	1.07	1.40	61.1	165	125	4	18	18	1.88	2.23
065	77.1	160	130	4	14	16	1.49	2.00	77.1	185	145	4	18	18	2.60	3.24
080	90.3	190	150	4	18	18	1.99	2.70	90.3	200	160	4	18	20	2.61	3.50
100	115.9	210	170	4	18	18	2.39	3.70	115.9	220	180	8	18	20	3.14	4.60
125	141.6	240	200	8	18	20	3.23	5.20	141.6	250	210	8	18	22	4.77	7.30
150	170.5	265	225	8	18	20	4.41	7.50	170.5	285	240	8	22	22	6.34	10.10
175	-	-	-	-	-	-	-	-	196.1	315	270	8	22	24	6.82	11.80
200	221.8	320	280	8	18	22	6.33	12.20	221.8	340	295	8	22	24	7.53	14.00
250	276.2	375	335	12	18	24	9.45	19.30	276.2	395	350	12	22	26	11.80	22.70
300	327.6	440	395	12	22	24	10.30	24.30	327.6	445	400	12	22	26	13.50	29.50
350	359.7	490	445	12	22	26	14.00	33.20	359.7	505	460	16	22	28	16.40	37.10
400	423.7	540	495	16	22	28	16.90	41.90	423.7	565	515	16	26	32	23.00	52.50
450	462.3	595	550	16	22	30	21.60	53.00	462.3	615	565	20	26	38	29.50	68.80
500	513.6	645	600	20	22	30	23.10	61.90	513.6	670	620	20	26	38	33.50	82.10

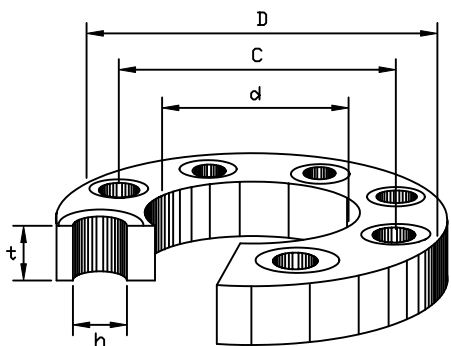


Slip-On

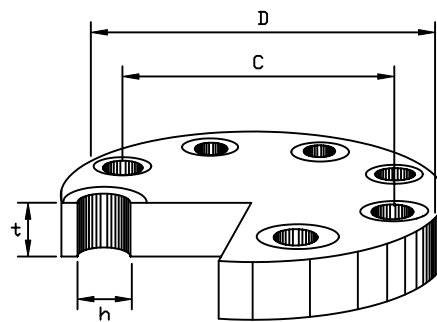
 Series DIN 2576(PN16) PN16
 Series DIN 2576(PN40) PN40

Blind

Series DIN 2527 PN16 & PN40

**Flanges - Slip-On & Blind
 DIN PN16 & PN40**


Slip-On Type



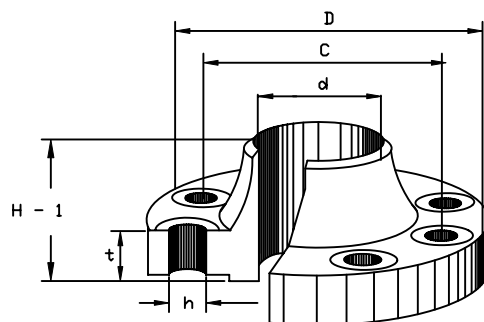
Blind Type

Size	DIN PN16							DIN PN40						
	d	D	C	no	h	t	Weight (kg) SO BL	d	D	C	no	h	t	Weight (kg) SO BL
010	17.7	90	60	4	14	14	0.51 0.53	17.7	90	60	4	14	14	0.60 0.60
015	22.2	95	65	4	14	14	0.56 0.60	22.2	95	65	4	14	16	0.70 0.70
020	27.6	105	75	4	14	16	0.72 0.79	27.6	105	75	4	14	18	0.80 0.90
025	34.4	115	85	4	14	16	1.13 1.23	34.4	115	85	4	14	18	1.30 1.50
032	43.1	140	100	4	18	16	1.46 1.66	43.1	140	100	4	18	18	1.60 1.80
040	49	150	110	4	18	16	1.56 1.81	49	150	110	4	18	18	1.70 2.00
050	61.1	165	125	4	18	18	1.70 2.10	61.1	165	125	4	18	20	1.90 2.40
065	77.1	185	145	4	18	18	2.40 3.10	77.1	185	145	8	18	22	2.60 3.40
080	90.3	200	160	8	18	20	3.50 4.50	90.3	200	160	8	18	24	3.80 4.90
100	115.9	220	180	8	18	20	4.50 6.30	115.9	235	190	8	22	24	4.90 6.90
125	141.6	250	210	8	18	22	6.50 9.20	141.6	270	220	8	26	26	7.80 11.00
150	170.5	285	240	8	22	22	8.70 12.80	170.5	300	250	8	26	28	10.10 14.90
175	196.1	315	270	8	22	24	8.95 13.15	196.1	350	295	12	30	28	11.35 16.45
200	221.8	340	295	12	22	24	10.90 18.60	221.8	375	320	12	30	30	12.60 21.40
250	276.2	405	355	12	26	26	18.00 30.60	276.2	450	385	12	33	32	21.90 37.20
300	327.6	460	410	12	26	28	21.50 40.70	327.6	515	450	16	33	34	25.80 48.80
350	359.7	520	470	16	26	30	30.80 57.80	359.7	580	510	16	36	38	36.20 68.00
400	423.7	580	525	16	30	32	42.80 82.20	423.7	660	585	16	39	40	51.70 99.40
450	462.3	640	585	20	30	34	55.10 107.60	462.3	685	610	20	39	42	66.10 129.10
500	513.6	715	650	20	33	34	65.10 133.10	513.6	755	670	20	42	44	77.40 158.40



Series DIN 2633 ... PN16
 Series DIN 2635 ... PN40

Flanges - Weld-Neck DIN PN16 & PN40



Weld-Neck

Size	DIN PN16								DIN PN40							
	d	D	C	No.	h	t	H-1	Weight KG	d	D	C	No.	h	t	H-1	Weight KG
010	17.2	90	60	4	14	14	35	0.58	17.2	90	60	4	14	16	35	0.66
015	21.3	95	65	4	14	14	35	0.65	21.3	95	65	4	14	16	38	0.75
020	26.9	105	75	4	14	16	38	0.95	26.9	105	75	4	14	18	40	1.06
025	33.7	115	85	4	14	16	38	1.14	33.7	115	85	4	14	18	40	1.29
032	42.4	140	100	4	18	16	40	1.69	42.4	140	100	4	18	18	42	1.88
040	48.3	150	110	4	18	16	42	1.86	48.3	150	110	4	18	18	45	2.33
050	60.3	165	125	4	18	18	45	2.53	60.3	165	125	4	18	20	48	2.82
065	76.1	185	145	4	18	18	45	3.06	76.1	185	145	8	18	22	52	3.74
080	88.9	200	160	8	18	20	50	3.7	88.9	200	160	8	18	24	58	4.75
100	114.3	220	180	8	18	20	52	4.62	114.3	235	190	8	22	24	65	6.52
125	139.7	250	210	8	18	22	55	6.3	139.7	270	220	8	26	26	68	9.07
150	168.3	285	240	8	22	22	55	7.75	168.3	300	250	8	26	28	75	11.8
175	193.7	315	270	8	22	24	60	9.85	193.7	350	295	12	30	32	82	18.2
200	219.1	340	295	12	22	24	62	11	219.1	375	320	12	30	34	88	21.5
250	273	405	355	12	26	26	70	15.6	273	450	385	12	33	38	105	34.9
300	323.9	460	410	12	26	28	78	22	323.9	515	450	16	33	42	115	49.7
350	355.6	520	470	16	26	30	82	31.2	355.6	580	510	16	33	46	125	68.1
400	406.4	580	525	16	30	32	85	39.3	406.4	660	585	16	39	50	135	96.5
500	508	715	650	20	33	34	90	61	508	755	670	20	42	52	140	117


 Office No.02, 1st Floor, Shreeji Plaza, CHS Tata Road
 No 02, Opera House, Charni Road Mumbai - 400004

info@adcoforge.com

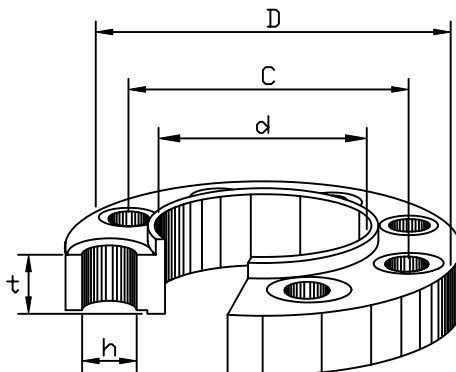
GST NO : 27AAXCA2226N1Z4


 +91-22-6659 5582 / 6659 5581 /
 4602 5379 (15 Lines)

www.adcoforge.com

Series DIN 86030 ... PN16
Series DIN 86029 ... PN10

Flanges - Slip-On Raised Face DIN PN10 & PN16



Slip-On Raised Face

Size	DIN PN10								DIN PN16							
	d	D	C	No.	h	t	H-1	Weight KG	d	D	C	No.	h	t	H-1	Weight KG
010	17.7	90	60	4	14	14	20	0.56	17.7	90	60	4	14	14	20	0.56
015	22	95	65	4	14	14	20	0.64	22	95	65	4	14	14	20	0.64
020	27.6	105	75	4	14	16	24	0.98	27.6	105	75	4	14	16	24	0.98
025	34.4	115	85	4	14	16	24	1.12	34.4	115	85	4	14	16	24	1.12
032	43.1	140	100	4	18	16	26	1.58	43.1	140	100	4	18	16	26	1.58
040	49	150	110	4	18	16	26	1.77	49	150	110	4	18	16	26	1.77
050	61.1	165	125	4	18	18	28	2.40	61.1	165	125	4	18	18	28	2.40
065	77.1	185	145	4	18	18	32	3.10	77.1	185	145	4	18	18	32	3.10
080	90.3	200	160	8	18	20	34	3.80	90.3	200	160	8	18	20	34	3.80
100	115.9	220	180	8	18	20	38	4.30	115.9	220	180	8	18	20	38	4.30
125	141.6	250	210	8	18	22	40	5.80	141.6	250	210	8	18	22	40	5.80
150	170.5	285	240	8	22	22	44	7.10	170.5	285	240	8	22	22	44	7.10
175	196.1	315	270	8	22	24	44	9.10	196.1	315	270	8	22	24	44	9.10
200	222	340	295	8	22	24	44	9.90	222	340	295	12	22	24	44	9.70
250	276	395	350	12	22	26	46	12.70	276	405	355	12	26	26	46	13.40
300	327	445	400	12	22	26	46	14.40	327	460	410	12	26	28	46	17.30
350	359	505	460	16	22	26	53	22.30	359	520	470	16	26	30	57	27.60
400	410	565	515	16	26	26	57	26.70	410	580	525	16	30	32	63	36.00
500	512	670	620	20	26	28	67	37.30	512	715	650	20	33	34	73	56.40



Office No.02, 1st Floor, Shreeji Plaza, CHS Tata Road
No 02, Opera House, Charni Road Mumbai - 400004



info@adcoforge.com

GST NO : 27AAXCA2226N1Z4



+91-22-6659 5582 / 6659 5581 /
4602 5379 (15 Lines)



www.adcoforge.com

Conversion Table - Linear

From Inches to Millimeters

1 Inch = 25.4mm

Inch	0	1/16	1/8	3/16	1/4	5/16	3/8	7/16	1/2	9/16	5/8	11/16	3/4	13/16	7/8	15/16
0	mm	1.6	3.2	4.8	6.4	7.9	9.5	11.1	12.7	14.3	15.9	17.5	19.1	20.6	22.2	23.8
1	25.4	27.0	28.6	30.2	31.8	33.3	34.9	36.5	38.1	39.7	41.3	42.9	44.5	46.0	47.6	49.2
2	50.8	52.4	54.0	55.6	57.2	58.7	60.3	61.9	63.5	65.1	66.7	68.3	69.9	71.4	73.0	74.6
3	76.2	77.8	79.4	81.0	82.6	84.1	85.7	87.3	88.9	90.5	92.1	93.7	95.3	96.8	98.4	100.0
4	101.6	103.2	104.8	106.4	108.0	109.5	111.1	112.7	114.3	115.9	117.5	119.1	120.7	122.2	123.8	125.4
5	127.0	128.6	130.2	131.8	133.4	134.9	136.5	138.1	139.7	141.3	142.9	144.5	146.1	147.6	149.2	150.8
6	152.4	154.0	155.6	157.2	158.8	160.3	161.9	163.5	165.1	166.7	168.3	169.9	171.5	173.0	174.6	176.2
7	177.8	179.4	181.0	182.6	184.2	185.7	187.3	188.9	190.5	192.1	193.7	195.3	196.9	198.4	200.0	201.6
8	203.2	204.8	206.4	208.0	209.6	211.1	212.7	214.3	215.9	217.5	219.1	220.7	222.3	223.8	225.4	227.0
9	228.6	230.2	231.8	233.4	235.0	236.5	238.1	239.7	241.3	242.9	244.5	246.1	247.7	249.2	250.8	252.4
10	254.0	255.6	257.2	258.8	260.4	261.9	263.5	265.1	266.7	268.3	269.9	271.5	273.1	274.6	276.2	277.8
11	279.4	281.0	282.6	284.2	285.8	287.3	288.9	290.5	292.1	293.7	295.3	296.9	298.5	300.0	301.6	303.2
12	304.8	306.4	308.0	309.6	311.2	312.7	314.3	315.9	317.5	319.1	320.7	322.3	323.9	325.4	327.0	328.6
13	330.2	331.8	333.4	335.0	336.6	338.1	339.7	341.3	342.9	344.5	346.1	347.7	349.3	350.8	352.4	354.0
14	355.6	357.2	358.8	360.4	362.0	363.5	365.1	366.7	368.3	369.9	371.5	373.1	374.7	376.2	377.8	379.4
15	381.0	382.6	384.2	385.8	387.4	388.9	390.5	392.1	393.7	395.3	396.9	398.5	400.1	401.6	403.2	404.8
16	406.4	408.0	409.6	411.2	412.8	414.3	415.9	417.5	419.1	420.7	422.3	423.9	425.5	427.0	428.6	430.2
17	431.8	433.4	435.0	436.6	438.2	439.7	441.3	442.9	444.5	446.1	447.7	449.3	450.9	452.4	454.0	455.6
18	457.2	458.8	460.4	462.0	463.6	465.1	466.7	468.3	469.9	471.5	473.1	474.7	476.3	477.8	479.4	481.0
19	482.6	484.2	485.8	487.4	489.0	490.5	492.1	493.7	495.3	496.9	498.5	500.1	501.7	503.2	504.8	506.4
20	508.0	509.6	511.2	512.8	514.4	515.9	517.5	519.1	520.7	522.3	523.9	525.5	527.1	528.6	530.2	531.8
21	533.4	535.0	536.6	538.2	539.8	541.3	542.9	544.5	546.1	547.7	549.3	550.9	552.5	554.0	555.6	557.2
22	558.8	560.4	562.0	563.6	565.2	566.7	568.3	569.9	571.5	573.1	574.7	576.3	577.9	579.4	581.0	582.6
23	584.2	585.8	587.4	589.0	590.6	592.1	593.7	595.3	596.9	598.5	600.1	601.7	603.3	604.8	606.4	608.0
24	609.6	611.2	612.8	614.4	616.0	617.5	619.1	620.7	622.3	623.9	625.5	627.1	628.7	630.2	631.8	633.4
25	635.0	636.6	638.2	639.8	641.4	642.9	644.5	646.1	647.7	649.3	650.9	652.5	654.1	655.6	657.2	658.8

Example:

In order to obtain the millimeter (mm) dimension for 7-1/2", find 7" on the x (vertical) axis and 1/2" on the y (horizontal) axis of the chart. The intersection of the two numbers is the millimeter (mm) equivalent to 7-1/2" (or 190.50mm).



Office No.02, 1st Floor, Shreeji Plaza, CHS Tata Road
 No 02, Opera House, Charni Road Mumbai - 400004



info@adcoforge.com

GST NO : 27AAXCA2226N1Z4



+91-22-6659 5582 / 6659 5581 /
 4602 5379 (15 Lines)



www.adcoforge.com

Conversion Table - Pressure

From PSI to Kg/Cm2 and Kg/Cm2 to PSI

PSI	Kg/Cm2	PSI	Kg/Cm2	PSI	Kg/Cm2	PSI	Kg/Cm2	PSI	Kg/Cm2	PSI	Kg/Cm2	PSI	Kg/Cm2	PSI	Kg/Cm2
1	0.07	31	2.18	61	4.29	91	6.40	205	14.42	410	28.83	710	49.93	1010	71.03
2	0.14	32	2.25	62	4.36	92	6.47	210	14.77	420	29.54	720	50.63	1020	71.73
3	0.21	33	2.32	63	4.43	93	6.54	215	15.12	430	30.24	730	51.34	1030	72.43
4	0.28	34	2.39	64	4.50	94	6.61	220	15.47	440	30.94	740	52.04	1040	73.14
5	0.35	35	2.46	65	4.57	95	6.68	225	15.82	450	31.65	750	52.74	1050	73.84
6	0.42	36	2.53	66	4.64	96	6.75	230	16.17	460	32.35	760	53.45	1060	74.54
7	0.49	37	2.60	67	4.71	97	6.82	235	16.53	470	33.05	770	54.15	1070	75.25
8	0.56	38	2.67	68	4.78	98	6.89	240	16.88	480	33.76	780	54.85	1080	75.95
9	0.63	39	2.74	69	4.85	99	6.96	245	17.23	490	34.46	790	55.56	1090	76.65
10	0.70	40	2.81	70	4.92	100	7.03	250	17.58	500	35.16	800	56.26	1100	77.36
11	0.77	41	2.88	71	4.99	105	7.38	255	17.93	510	35.86	810	56.96	1120	78.76
12	0.84	42	2.95	72	5.06	110	7.74	260	18.28	520	36.57	820	57.67	1140	80.17
13	0.91	43	3.02	73	5.13	115	8.09	265	18.64	530	37.27	830	58.37	1160	81.58
14	0.98	44	3.09	74	5.20	120	8.44	270	18.99	540	37.97	840	59.07	1180	82.98
15	1.05	45	3.16	75	5.27	125	8.79	275	19.34	550	38.68	850	59.77	1200	84.39
16	1.13	46	3.23	76	5.34	130	9.14	280	19.69	560	39.38	860	60.48	1220	85.79
17	1.20	47	3.31	77	5.41	135	9.49	285	20.04	570	40.08	870	61.18	1240	87.20
18	1.27	48	3.38	78	5.49	140	9.85	290	20.39	580	40.79	880	61.88	1260	88.61
19	1.34	49	3.45	79	5.56	145	10.20	295	20.75	590	41.49	890	62.59	1280	90.01
20	1.41	50	3.52	80	5.63	150	10.55	300	21.10	600	42.19	900	63.29	1300	91.42
21	1.48	51	3.59	81	5.70	155	10.90	310	21.80	610	42.90	910	63.99	1320	92.83
22	1.55	52	3.66	82	5.77	160	11.25	320	22.50	620	43.60	920	64.70	1340	94.23
23	1.62	53	3.73	83	5.84	165	11.60	330	23.21	630	44.30	930	65.40	1360	95.64
24	1.69	54	3.80	84	5.91	170	11.95	340	23.91	640	45.01	940	66.10	1380	97.05
25	1.76	55	3.87	85	5.98	175	12.31	350	24.61	650	45.71	950	66.81	1400	98.45
26	1.83	56	3.94	86	6.05	180	12.66	360	25.32	660	46.41	960	67.51	1420	99.86
27	1.90	57	4.01	87	6.12	185	13.01	370	26.02	670	47.12	970	68.21	1440	101.27
28	1.97	58	4.08	88	6.19	190	13.36	380	26.72	680	47.82	980	68.92	1460	102.67
29	2.04	59	4.15	89	6.26	195	13.71	390	27.43	690	48.52	990	69.62	1480	104.08
30	2.11	60	4.22	90	6.33	200	14.06	400	28.13	700	49.23	1000	70.32	1500	105.49

To convert to Kg/Cm2 from PSI, divide PSI by 14.22

To convert to PSI from Kg/Cm2, multiply Kg/Cm2 by 14.22



Office No.02, 1st Floor, Shreeji Plaza, CHS Tata Road
 No 02, Opera House, Charni Road Mumbai - 400004



info@adcoforge.com

GST NO : 27AAXCA2226N1Z4



+91-22-6659 5582 / 6659 5581 /
 4602 5379 (15 Lines)



www.adcoforge.com

Conversion Table - Temperature

From Fahrenheit to Celsius and Celsius to Fahrenheit

F	C	F	C	F	C	F	C	F	C	F	C
-160	-106.7	-40	-40.0	75	23.9	195	90.6	850	454.4	2050	1121.1
-155	-103.9	-35	-37.2	80	26.7	200	93.3	900	482.2	2100	1148.9
-150	-101.1	-30	-34.4	85	29.4	205	96.1	950	510.0	2150	1176.7
-145	-98.3	-25	-31.7	90	32.2	210	98.9	1000	537.8	2200	1204.4
-140	-95.6	-20	-28.9	95	35.0	212	100.0	1050	565.6	2250	1232.2
-135	-92.8	-15	-26.1	100	37.8	215	101.7	1100	593.3	2300	1260.0
-130	-90.0	-10	-23.3	105	40.6	220	104.4	1150	621.1	2350	1287.8
-125	-87.2	-5	-20.6	110	43.3	225	107.2	1200	648.9	2400	1315.6
-120	-84.4	0	-17.8	115	46.1	230	110.0	1250	676.7	2450	1343.3
-115	-81.7	5	-15.0	120	48.9	235	112.8	1300	704.4	2500	1371.1
-110	-78.9	10	-12.2	125	51.7	240	115.6	1350	732.2	2550	1398.9
-105	-76.1	15	-9.4	130	54.4	245	118.3	1400	760.0	2600	1426.7
-100	-73.3	20	-6.7	135	57.2	250	121.1	1450	787.8	2650	1454.4
-95	-70.6	25	-3.9	140	60.0	300	148.9	1500	815.6	2700	1482.2
-90	-67.8	30	-1.1	145	62.8	350	176.7	1550	843.3	2750	1510.0
-85	-65.0	32	0.0	150	65.6	400	204.4	1600	871.1	2800	1537.8
-80	-62.2	35	1.7	155	68.3	450	232.2	1650	898.9	2850	1565.6
-75	-59.4	40	4.4	160	71.1	500	260.0	1700	926.7	2900	1593.3
-70	-56.7	45	7.2	165	73.9	550	287.8	1750	954.4	2950	1621.1
-65	-53.9	50	10.0	170	76.7	600	315.6	1800	982.2	3000	1648.9
-60	-51.1	55	12.8	175	79.4	650	343.3	1850	1010.0	3050	1676.7
-55	-48.3	60	15.6	180	82.2	700	371.1	1900	1037.8	3100	1704.4
-50	-45.6	65	18.3	185	85.0	750	398.9	1950	1065.6	3150	1732.2
-45	-42.8	70	21.1	190	87.8	800	426.7	2000	1093.3	3200	1760.0

To convert to Fahrenheit from Celsius: $F = 32 + 9/5 C$

To convert to Celsius from Fahrenheit: $C = 5/9 (F-32)$



Office No.02, 1st Floor, Shreeji Plaza, CHS Tata Road
 No 02, Opera House, Charni Road Mumbai - 400004



info@adcoforge.com

GST NO : 27AAXCA2226N1Z4



+91-22-6659 5582 / 6659 5581 /
 4602 5379 (15 Lines)



www.adcoforge.com